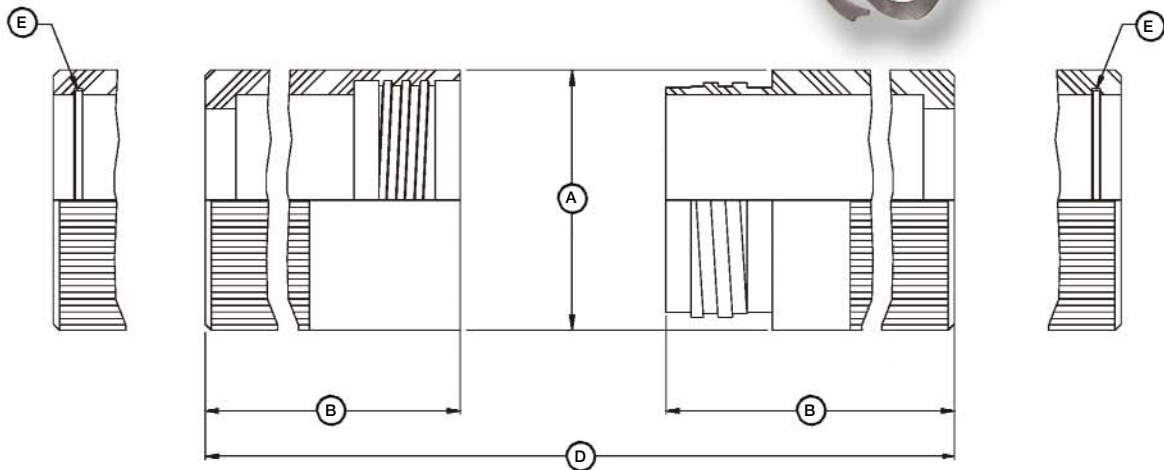


DIMENSION DETAILS

ALL-WET SERIES FLS ALL-WET Locking Sleeve



ALL-WET SERIES MLS ALL-WET Locking Sleeve



ALL-WET LOCKING SLEEVES IN-LINE	BULKHEAD	A - DIAMETER (INCHES)	B - (INCHES)	C - (INCHES)	D - (INCHES)	E - SPIROLOX
AWL-FLS	AWL-FBLS	1.25	1.23	-	2.10	RR-100
AWL-MLS	AWL-MBLS	1.25	-	1.38	2.10	RR-100
AWM-FLS	AWM-FBLS	1.50	1.23	-	2.10	RR-125
AWM-MLS	AWM-MBLS	1.50	-	1.38	2.10	RR-125
AWO-FLS	AWO-FBLS	1.85	1.23	-	2.10	RR-162
AWO-MLS	AWO-MBLS	1.85	-	1.38	2.10	RR-162
-	AWQ-FBLS	2.50	1.44	-	2.94	- *
AWQ-MLS	-	2.50	-	2.00	2.94	-

NOTES:

- D - Delrin® (DuPont Trademark for Acetal Resin).
- S - Stainless Steel.
- Locking Sleeves will fit standard ALL-WET Connectors and ALL-WET Split Connectors.
- Specify Bulkhead or In-Line type locking sleeve.
- Bulkhead Locking Sleeve: Optional.
- If locking sleeves are required for AWL/M/O bulkhead connectors, they must be specified at time of connector order as they are factory installations only.
- * No spirolox in this Bulkhead Locking Sleeve.