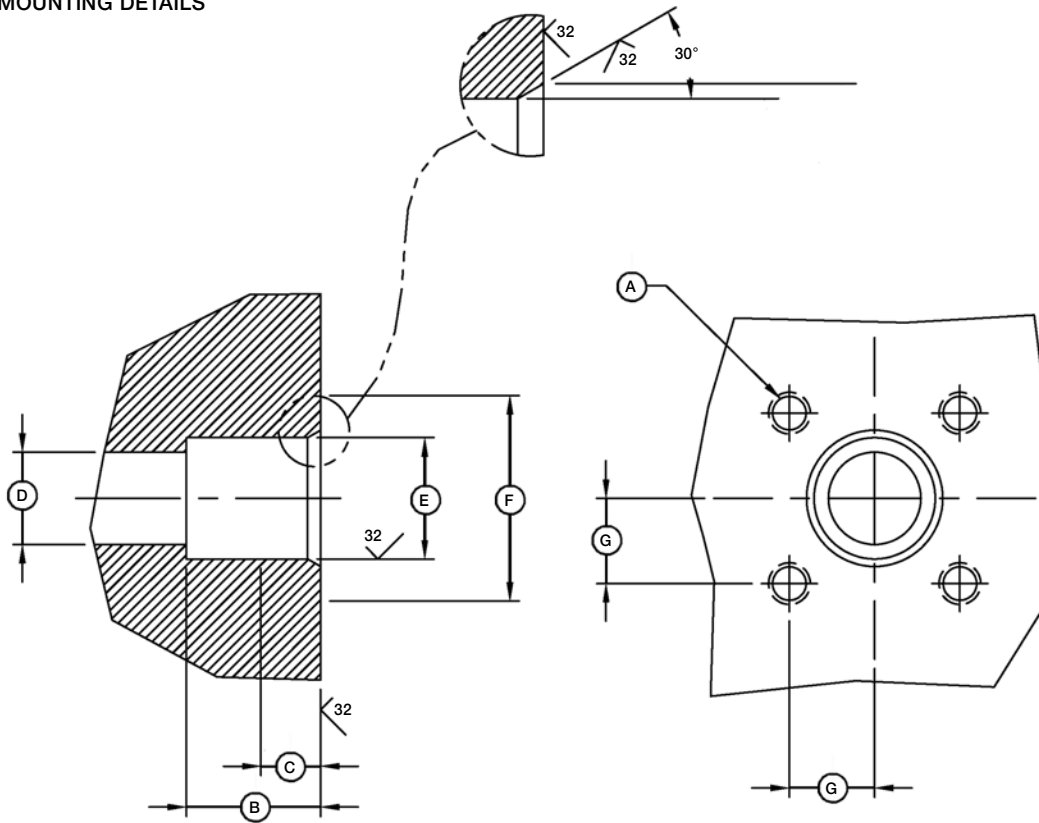


INTERFACE DETAILS

Micro MINI-CON SERIES MM-FCR

Micro MINI-CON Flange Connector Receptacle
MOUNTING DETAILS



FCR INTERFACE MOUNTING INFORMATION

CONNECTOR	A - THREAD	B - LENGTH	C - Ø	D - Ø	E - Ø	F - Ø	G - Ø
MMG-FCR	4 X 4-40 UNC-2B	0.45	0.20	0.31	0.408 0.407	0.62	0.286
MMK-FCR	4 X 4-40 UNC-2B	0.45	0.20	0.37	0.537 0.536	0.750	0.343
MML-FCR	4 X 4-40 UNC-2B	0.50	0.13	0.50	0.632 0.631	0.88	0.400
MMM-FCR	4 X 6-32 UNC-2B	0.52	0.20	0.50	0.711 0.710	1.00	0.438